

# Das TESLA Planungsbüro

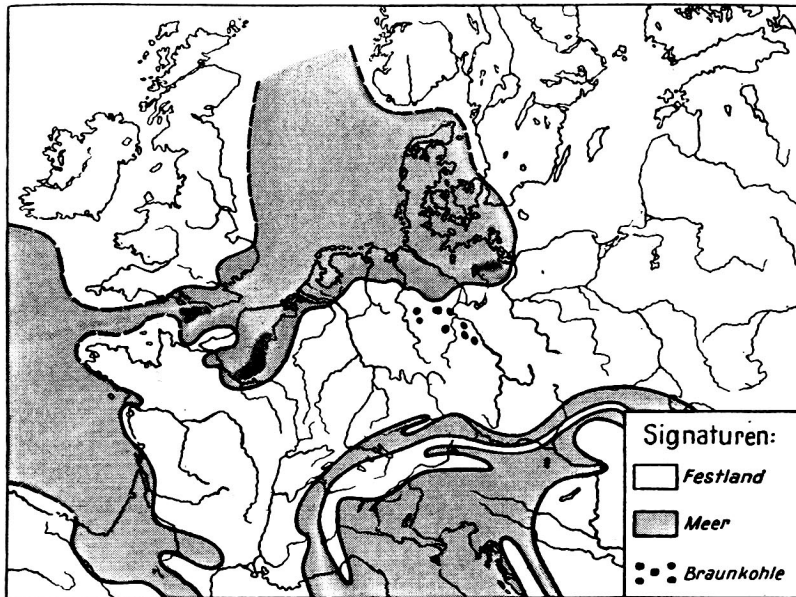
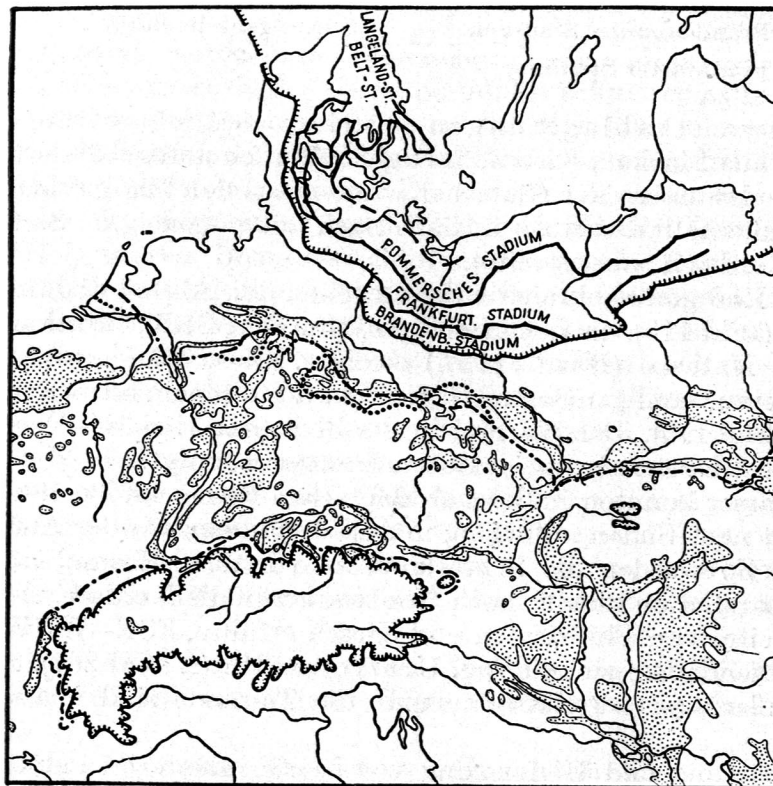


Bild 215. Paläogeographie während des mittleren Eozäns in Mitteleuropa (nach *Brinkmann* 1948 und v. *Bubnoff*, 1949) [85]

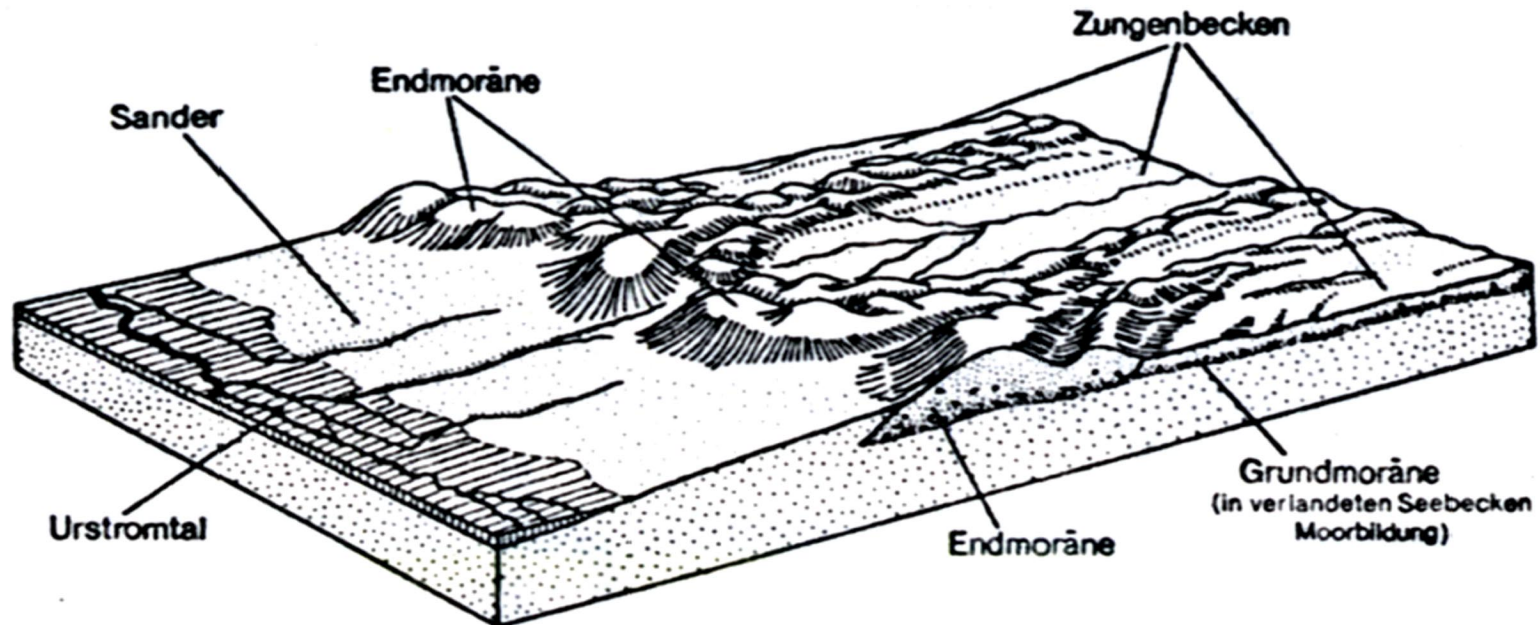


Mindel- (= Elster-) Eiszeit    Riß- (= Saale-) Eiszeit    Würm- (= Weichsel-) Eiszeit  
und Rückzugsstadien

Bild 219. Vereisungsgrenzen und Lößverbreitung in Mitteleuropa nach *Grahmann* und *Woldstedt* [80]

# Das TESLA Planungsbüro

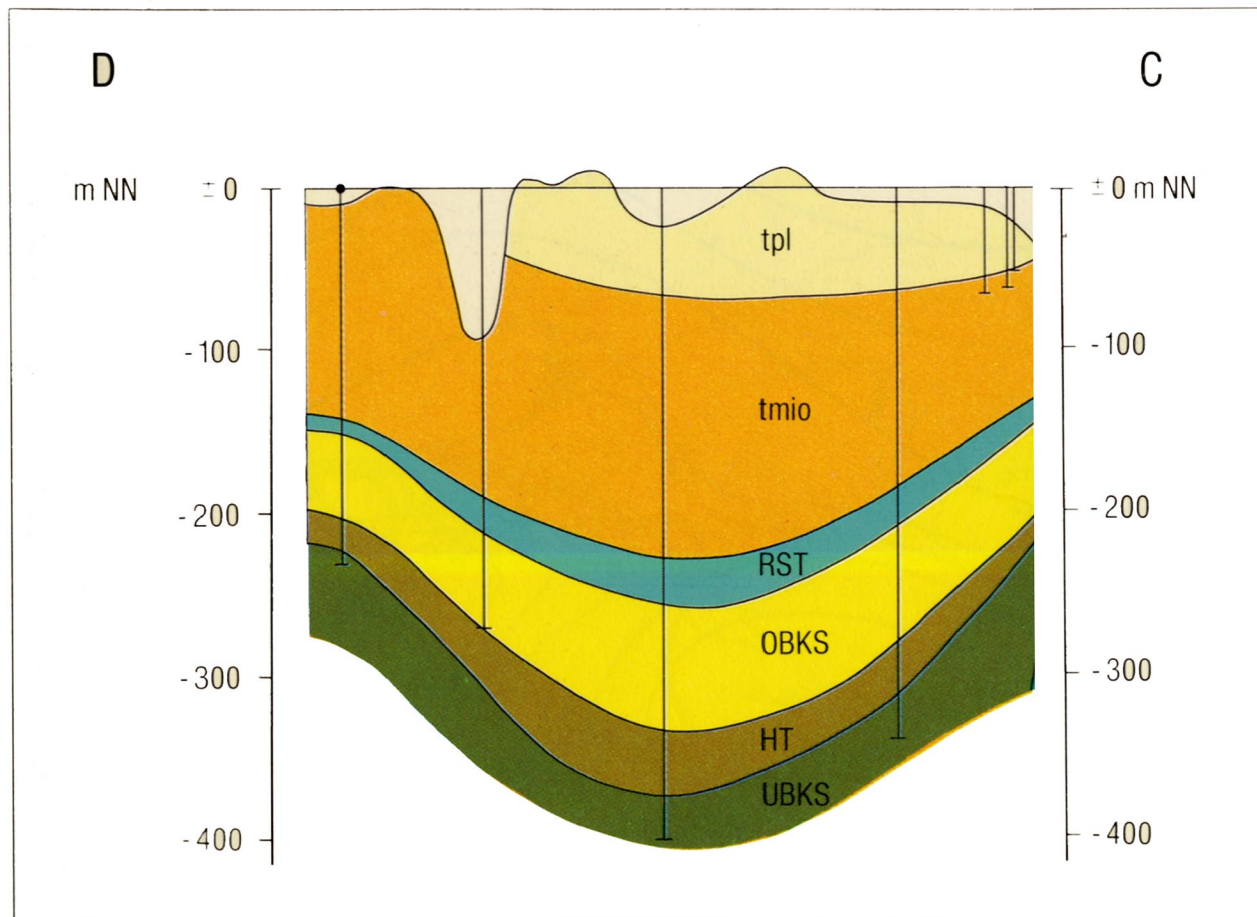
## Glaziale Serie





## Das TESLA Planungsbüro

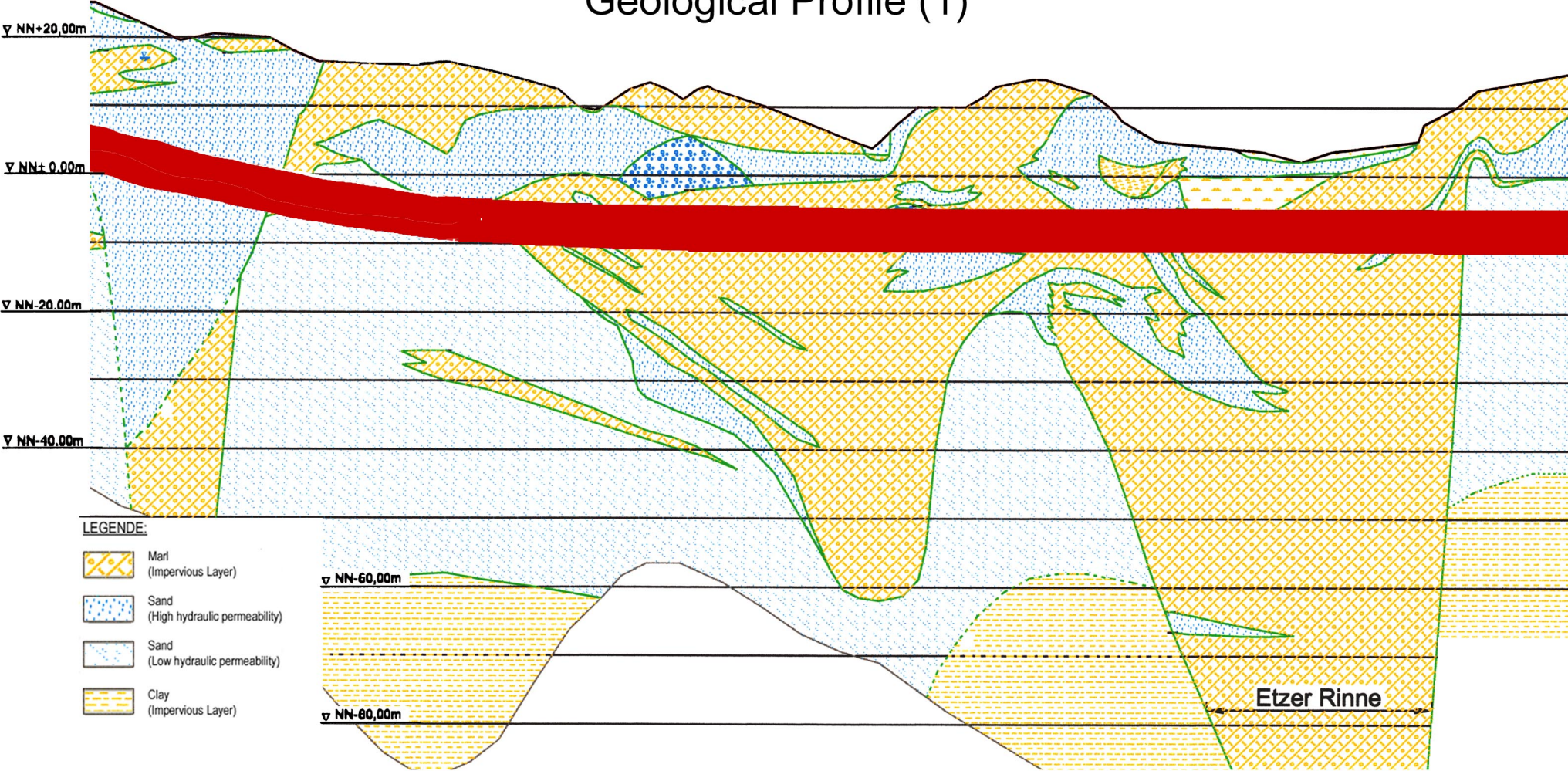
### Geological Profile TESLA-Side ( only tertiary layers )









# Das TESLA Planungsbüro

## Geological Profile (1)



LEGENDE:

-  Marl (Impervious Layer)
-  Sand (High hydraulic permeability)
-  Sand (Low hydraulic permeability)
-  Clay (Impervious Layer)



# Das TESLA Planungsbüro

## Geological Profile (2)

