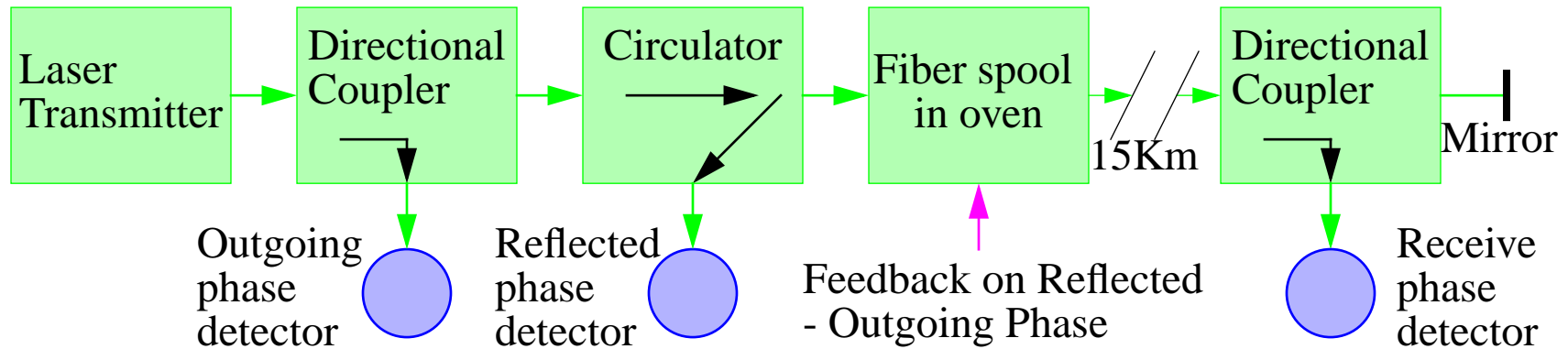


Block Diagram and System Performance



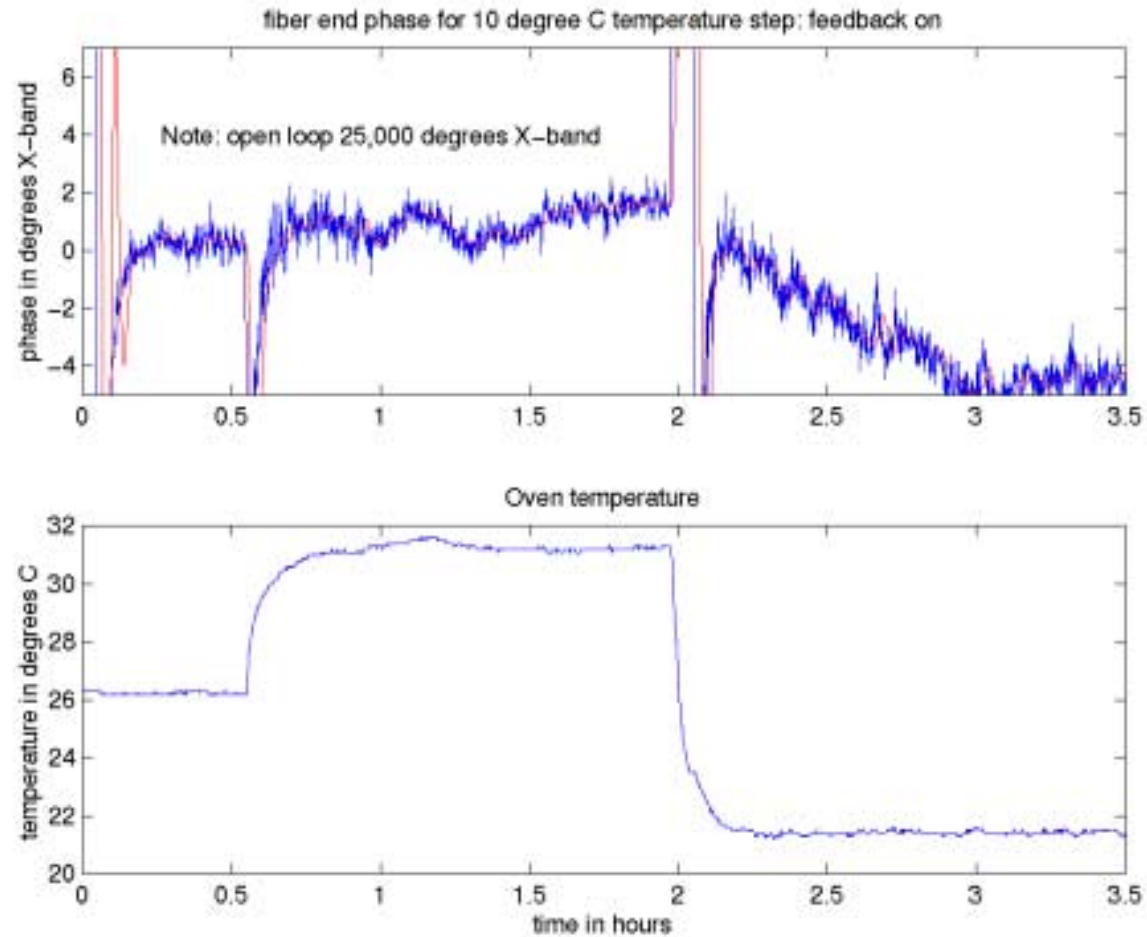
Parameter	NLC System	Test System - measured
Transmission distance	1 to 15 Kilometers	15 Kilometers
Fiber temperature range	+/- 5°C*	+/- 5°C
Long term phase stability	+/- 20° X-band	+/- 1° X-band in 20 Hours
Phase temperature coefficient	< 4° X-band / °C*	<2.5° X-band / °C
Phase Noise (RMS)	<0.3° X-band at f<10KHz**	0.9° X-band

*Based on SLAC summer / winter temperatures and 1 Meter burial depth

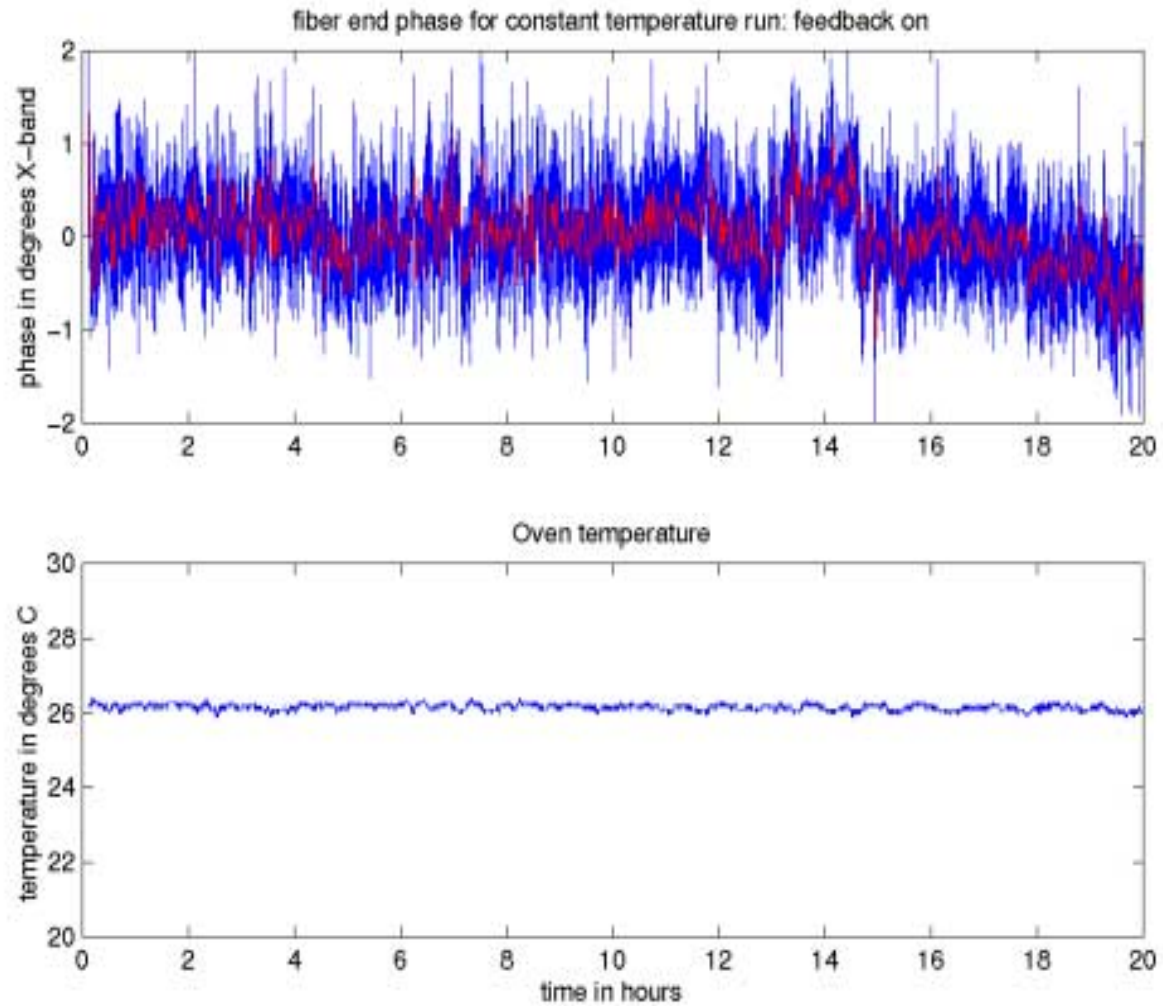
**The total RF noise budget per sector is approximately 1° X-band.

System Performance - Temperature Step

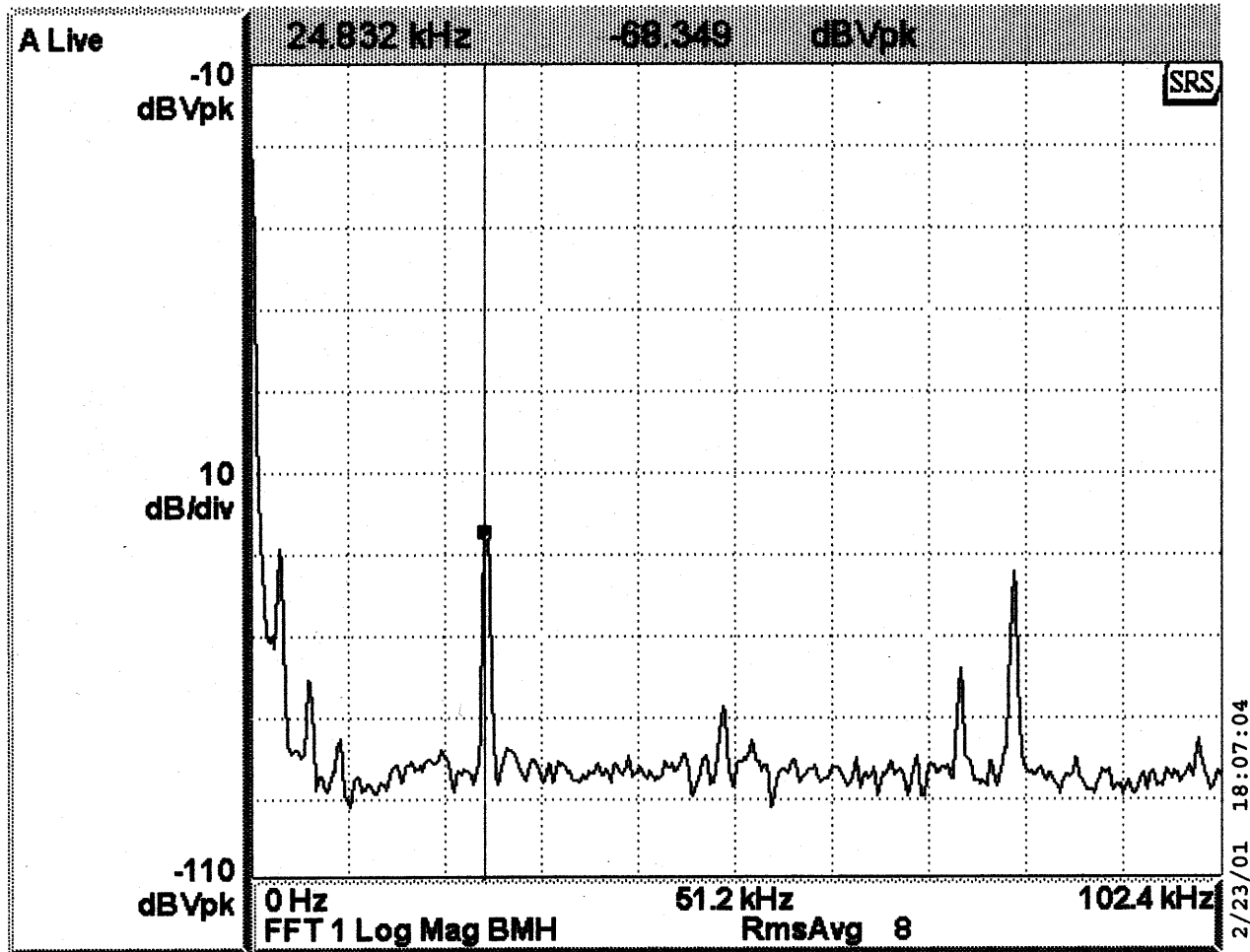
Note: The 4° X-band drift after the step is not yet understood (but is within spec).



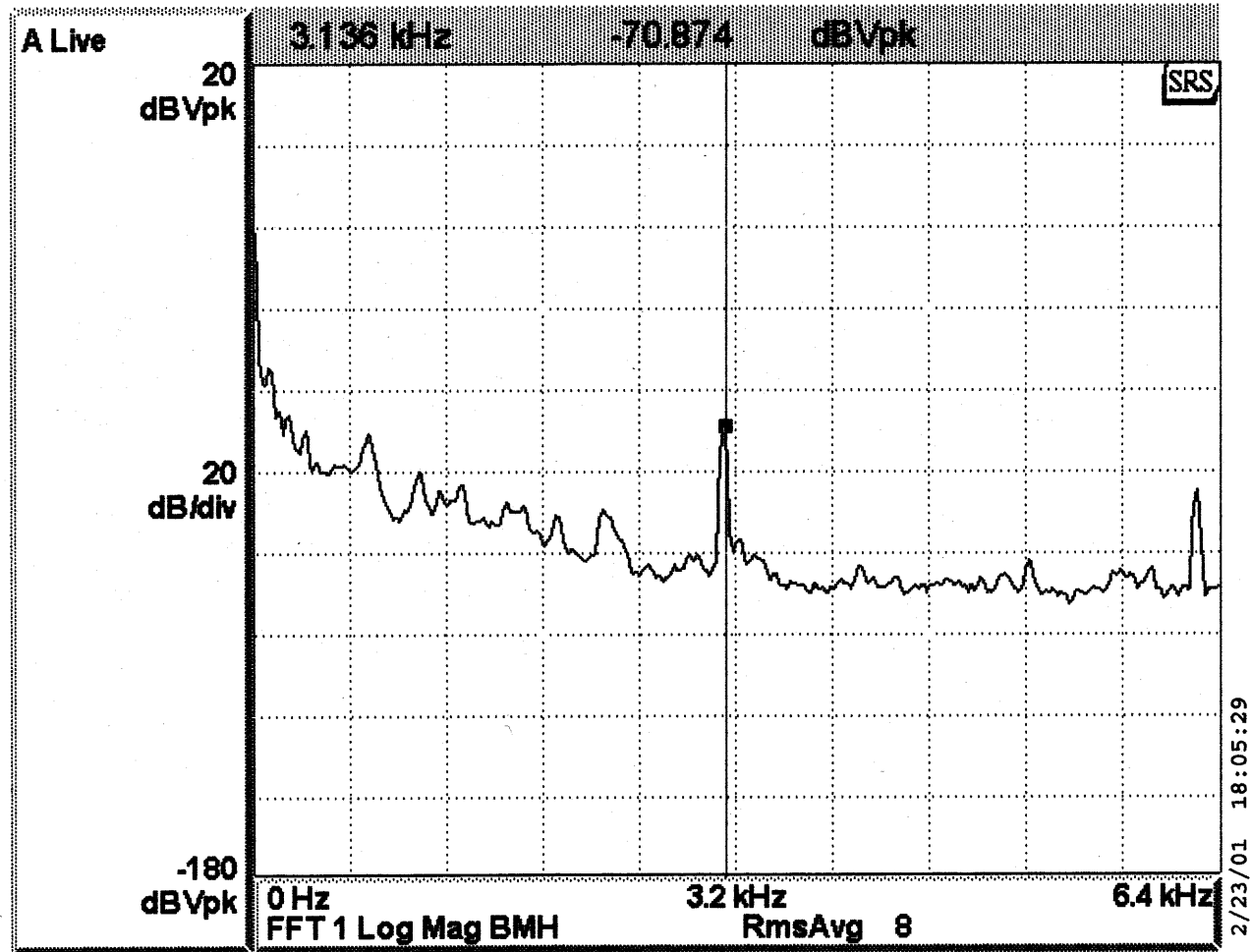
System Performance - Long Term Run



System Noise Plots DC - 100 KHz



System Noise Plots DC - 6KHz



System Octave noise plot

